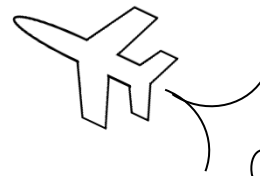


# Math on the Fly!



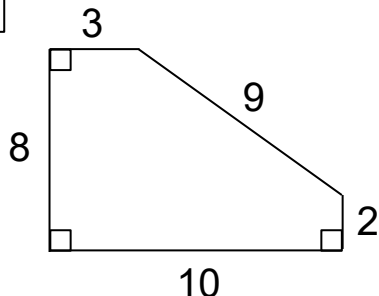
NAME: \_\_\_\_\_ DATE: \_\_\_\_\_

## Perimeter and Area of Compound Shapes

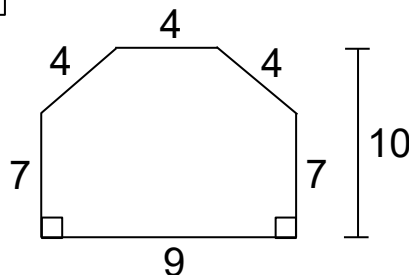
Find the area and perimeter of each figure.

Assume all lengths are in centimeters.

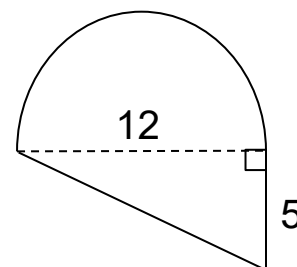
1.



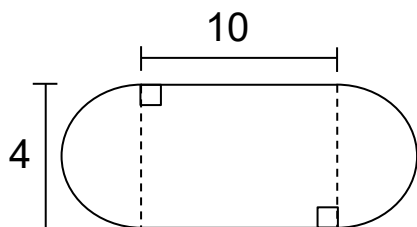
2.



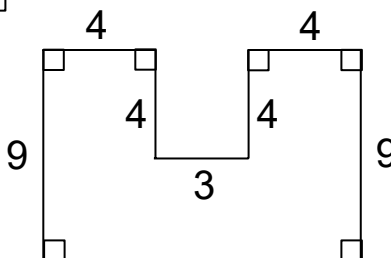
3.



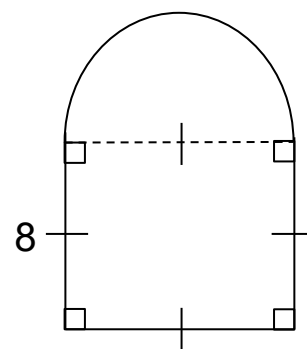
4.



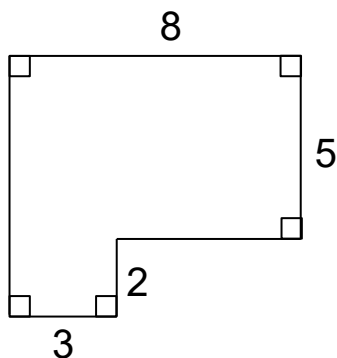
5.



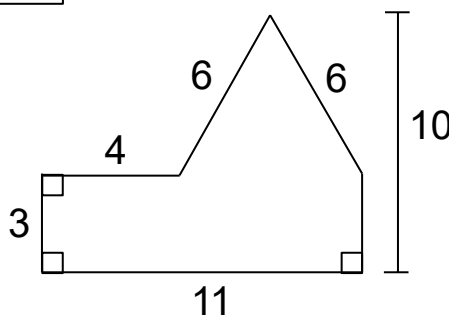
6.



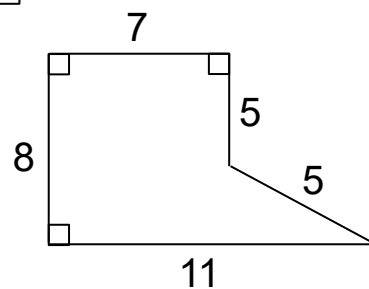
7.



8.



9.



## SOLUTIONS

1.  $P = 32 \text{ cm}, A = 59 \text{ cm}^2$

2.  $P = 35 \text{ cm}, A = 82.5 \text{ cm}^2$

3.  $P = (18 + 6\pi) \text{ cm} \quad A = (30 + 18\pi) \text{ cm}^2$   
 $\approx 36.85 \text{ cm} \quad \approx 86.55 \text{ cm}^2$

4.  $P = (20 + 4\pi) \text{ cm} \quad A = (40 + 4\pi) \text{ cm}^2$   
 $\approx 32.57 \text{ cm} \quad \approx 52.57 \text{ cm}^2$

5.  $P = 48 \text{ cm}, A = 87 \text{ cm}^2$

6.  $P = (24 + 4\pi) \text{ cm} \quad A = (64 + 8\pi) \text{ cm}^2$   
 $\approx 36.57 \text{ cm} \quad \approx 89.13 \text{ cm}^2$

7.  $P = 30 \text{ cm}, A = 46 \text{ cm}^2$

8.  $P = 33 \text{ cm}, A = 57.5 \text{ cm}^2$

9.  $P = 36 \text{ cm}, A = 62 \text{ cm}^2$