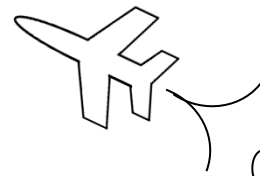


MAth on the Fly!



NAME: _____ DATE: _____

Conversions of Fractions and Percents

Change each fraction, whole number, or mixed number into a percent.

1. $\frac{1}{4}$

2. $\frac{3}{5}$

3. $\frac{9}{25}$

4. $\frac{11}{20}$

5. $\frac{7}{8}$

6. $\frac{5}{16}$

7. $\frac{31}{250}$

8. $\frac{73}{500}$

9. $4\frac{1}{2}$

10. 2

11. $5\frac{9}{10}$

12. $7\frac{2}{5}$

Change each percent to a fraction.

13. 4%

14. 9%

15. 27%

16. 35%

17. 60%

18. 84%

19. 90%

20. 100%

21. 250%

22. 375%

23. 500%

24. 648%

Get the latest in ACT Math test prep with books, worksheets and more!

<https://www.mathonthefly.com>

SOLUTIONS

$$1. \quad \frac{1}{4} = 0.25 = 25\%$$

$$2. \quad \frac{3}{5} = 0.60 = 60\%$$

$$3. \quad \frac{9}{25} = 0.36 = 36\%$$

$$4. \quad \frac{11}{20} = 0.55 = 55\%$$

$$5. \quad \frac{7}{8} = 0.875 = 87.5\%$$

$$6. \quad \frac{5}{16} = 0.3125 = 31.25\%$$

$$7. \quad \frac{31}{250} = 0.124 = 12.4\%$$

$$8. \quad \frac{73}{500} = 0.146 = 14.6\%$$

$$9. \quad 4\frac{1}{2} = 4.5 = 450\%$$

$$10. \quad 2 = 2.0 = 200\%$$

$$11. \quad 5\frac{9}{10} = 5.9 = 590\%$$

$$12. \quad 7\frac{2}{5} = 7.4 = 740\%$$

$$13. \quad \frac{4}{100} \xrightarrow{\text{reduce}} \frac{1}{25}$$

$$14. \quad \frac{9}{100}$$

$$15. \quad \frac{27}{100}$$

$$16. \quad \frac{35}{100} \xrightarrow{\text{reduce}} \frac{7}{20}$$

$$17. \quad \frac{60}{100} \xrightarrow{\text{reduce}} \frac{3}{5}$$

$$18. \quad \frac{84}{100} \xrightarrow{\text{reduce}} \frac{21}{25}$$

$$19. \quad \frac{90}{100} \xrightarrow{\text{reduce}} \frac{9}{10}$$

$$20. \quad \frac{100}{100} \xrightarrow{\text{reduce}} 1$$

$$21. \quad \frac{250}{100} \xrightarrow{\text{reduce}} \frac{5}{2} \text{ or } 2\frac{1}{2}$$

$$22. \quad \frac{375}{100} \xrightarrow{\text{reduce}} \frac{15}{4} \text{ or } 3\frac{3}{4}$$

$$23. \quad \frac{500}{100} \xrightarrow{\text{reduce}} 5$$

$$24. \quad \frac{648}{100} \xrightarrow{\text{reduce}} \frac{162}{25} \text{ or } 6\frac{12}{25}$$