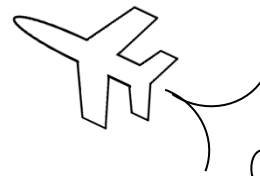


# MAth on the Fly!



NAME: \_\_\_\_\_ DATE: \_\_\_\_\_

## Least Common Denominator

Find the LCD for each set of fractions below.

1.  $\frac{7}{15}, \frac{9}{25}$

2.  $\frac{8}{21}, \frac{3}{28}$

3.  $\frac{19}{36}, \frac{19}{40}$

4.  $\frac{1}{12}, \frac{6}{25}$

5.  $\frac{13}{15}, \frac{5}{24}$

6.  $\frac{3}{14}, \frac{10}{21}$

7.  $\frac{1}{5}, \frac{5}{6}, \frac{1}{14}$

8.  $\frac{7}{8}, \frac{4}{15}, \frac{9}{20}$

9.  $\frac{3}{10}, \frac{11}{12}, \frac{7}{18}$

10.  $\frac{8}{9}, \frac{15}{16}, \frac{31}{48}$

11.  $\frac{1}{4}, \frac{5}{12}, \frac{13}{28}$

12.  $\frac{9}{16}, \frac{7}{18}, \frac{23}{24}$

## SOLUTIONS

1. LCD = 75

2. LCD = 84

3. LCD = 360

4. LCD = 300

5. LCD = 120

6. LCD = 42

7. LCD = 210

8. LCD = 120

9. LCD = 180

10. LCD = 144

11. LCD = 84

12. LCD = 144