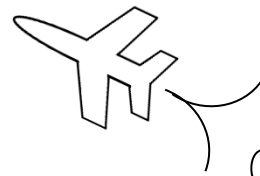


MAth on the Fly!



NAME: _____ DATE: _____

Comparing Fractions and Decimals

List the numbers in each problem from least to greatest.

1. $0.\overline{3}$, 0.03 , 0.333 , 0.33

2. 0.46 , 0.4399 , $0.\overline{46}$, 0.4

3. $\frac{11}{20}$, $\frac{13}{25}$, $\frac{8}{15}$, $\frac{6}{10}$, $\frac{7}{12}$

4. 0.2 , 0.199 , $\frac{3}{14}$, 0.02

5. 0.9 , $\frac{4}{5}$, $0.\overline{8}$, 0.81

6. 0.63 , $\frac{9}{15}$, $\frac{2}{3}$, $0.6\overline{3}$

7. $\frac{8}{11}$, $\frac{7}{9}$, $0.74\overline{5}$, 0.77

SOLUTIONS

1. $0.\bar{3} = 0.3333$
 $0.03 = 0.0300$
 $0.333 = 0.3330$
 $0.33 = 0.3300$

$$0.03 < 0.33 < 0.333 < 0.\bar{3}$$

2. $0.46 = 0.4600$
 $0.4399 = 0.4399$
 $0.\overline{46} = 0.4646$
 $0.4 = 0.4000$

$$0.4 < 0.4399 < 0.46 < 0.\overline{46}$$

3. $11/20 = 0.550$
 $13/25 = 0.520$
 $8/15 = 0.533$
 $6/10 = 0.600$
 $7/12 = 0.583$

$$13/25 < 8/15 < 11/20 < 7/12 < 6/10$$

4. $0.2 = 0.200$
 $0.199 = 0.199$
 $3/14 = 0.214$
 $0.02 = 0.020$

$$0.02 < 0.199 < 0.2 < 3/14$$

5. $0.9 = 0.900$
 $4/5 = 0.800$
 $0.\bar{8} = 0.888$
 $0.81 = 0.810$

$$4/5 < 0.81 < 0.\bar{8} < 0.9$$

6. $0.63 = 0.6300$
 $9/15 = 0.6000$
 $2/3 = 0.6666$
 $0.\bar{63} = 0.6333$

$$9/15 < 0.63 < 0.\bar{63} < 2/3$$

7. $8/11 = 0.727$
 $7/9 = 0.777$
 $0.74\bar{5} = 0.745$
 $0.77 = 0.770$

$$8/11 < 0.74\bar{5} < 0.77 < 7/9$$