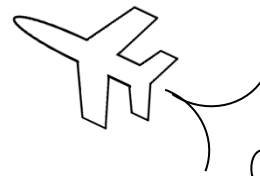


MAth on the Fly!



NAME: _____ DATE: _____

Solving Proportions Using Cross Multiplication

Find the missing value in each proportion.

1. $\frac{5}{10} = \frac{X}{6}$

2. $\frac{X}{3} = \frac{8}{12}$

3. $\frac{6}{10} = \frac{9}{X}$

4. $\frac{8}{X} = \frac{4}{5}$

5. $\frac{2}{6} = \frac{3}{X}$

6. $\frac{12}{22} = \frac{X}{11}$

7. $\frac{18}{10} = \frac{45}{X}$

8. $\frac{11}{X} = \frac{1}{7}$

9. $\frac{3}{X} = \frac{9}{12}$

10. $\frac{X}{12} = \frac{6}{8}$

11. $\frac{7}{14} = \frac{X}{2}$

12. $\frac{13}{26} = \frac{X}{60}$

13. $\frac{14}{6} = \frac{X}{3}$

14. $\frac{X}{6} = \frac{14}{21}$

15. $\frac{6}{60} = \frac{9}{X}$

16. $\frac{X}{25} = \frac{63}{35}$

17. $\frac{2}{10} = \frac{3}{X}$

18. $\frac{36}{45} = \frac{X}{40}$

19. $\frac{15}{6} = \frac{20}{X}$

20. $\frac{12}{X} = \frac{9}{12}$

SOLUTIONS

1. $X = 3$

2. $X = 2$

3. $X = 15$

4. $X = 10$

5. $X = 9$

6. $X = 6$

7. $X = 25$

8. $X = 77$

9. $X = 4$

10. $X = 9$

11. $X = 1$

12. $X = 30$

13. $X = 7$

14. $X = 4$

15. $X = 90$

16. $X = 45$

17. $X = 15$

18. $X = 32$

19. $X = 8$

20. $X = 16$