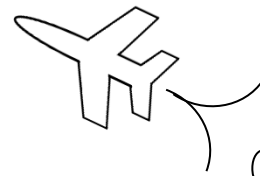


# MAth on the Fly!



NAME: \_\_\_\_\_ DATE: \_\_\_\_\_

## Finding Percents of Amounts

Find each quantity below.

- |    |             |    |            |    |            |
|----|-------------|----|------------|----|------------|
| 1. | 50% of 24   | 2. | 4% of 60   | 3. | 72% of 8   |
| 4. | 5.5% of 90  | 5. | 120% of 50 | 6. | 10% of 73  |
| 7. | 1.25% of 80 | 8. | 300% of 45 | 9. | 0.8% of 12 |

Solve each problem below.

10.

In a classroom, 35% of the students are wearing glasses.  
How many students are wearing glasses in a room with 40 students?

11.

At a bowling alley, 80% of the people bowl with their right hand.  
How many of the 65 people at the bowling alley *do not* bowl with their right hand?

12.

In a sweepstakes, 1.5% of the people will win prizes.  
How many people will win prizes if 200 people are in the sweepstakes?

13.

In a survey, 5% of respondents do not own a cell phone.  
If 120 respondents were surveyed, how many respondents own a cell phone?

14.

A 350 mL mixture is composed of 90% water.  
How many milliliters of water is contained in the mixture?

Get the latest in ACT Math test prep with books, worksheets and more!

<https://www.mathonthefly.com>

## SOLUTIONS

1.  $50\%$  of 24 = 12

2.  $4\%$  of 60 = 2.4

3.  $72\%$  of 8 = 5.76

4.  $5.5\%$  of 90 = 4.95

5.  $120\%$  of 50 = 60

6.  $10\%$  of 73 = 7.3

7.  $1.25\%$  of 80 = 1

8.  $300\%$  of 45 = 135

9.  $0.8\%$  of 12 = 0.096

10.  $35\%$  of 40 = 14 students

11.  $80\%$  of 65 = 52  
 $65 - 52 =$  13 people

12.  $1.5\%$  of 200 = 3 people

13.  $5\%$  of 120 = 6  
 $120 - 6 =$  114 respondents

14.  $90\%$  of 350 = 315 milliliters