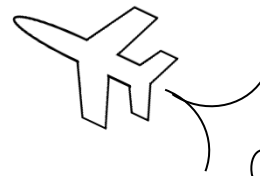


# MAth on the Fly!



NAME: \_\_\_\_\_ DATE: \_\_\_\_\_

## Solving One-Step Inequalities

Solve each inequality and graph the solution on a number line.

1.  $x + 3 < 10$

2.  $w - 4 > 8$

3.  $6y \leq 18$

4.  $\frac{m}{5} \geq 9$

5.  $14 > x + 1$

6.  $15 < b - 7$

7.  $8y \leq 88$

8.  $12 \leq \frac{a}{5}$

9.  $10 + z < 20$

10.  $-4 + c > -1$

11.  $3x \leq -21$

12.  $\frac{w}{-2} \geq 7$

13.  $x + 9 < 5$

14.  $m - 6 > -4$

15.  $-4p \leq -40$

16.  $-8 \leq \frac{n}{3}$

17.  $y + 7 < -2$

18.  $-11 < b - 1$

19.  $-30 \leq -5y$

20.  $\frac{x}{-6} \geq 1$

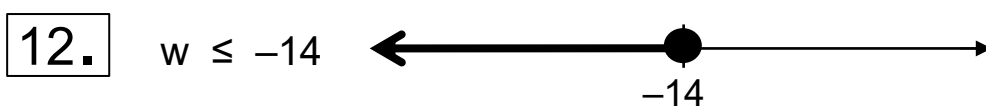
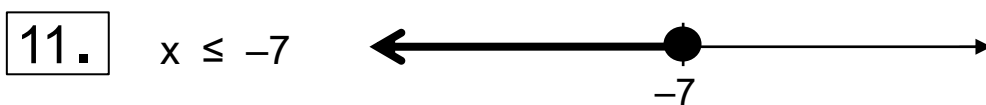
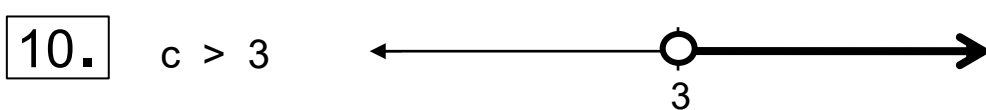
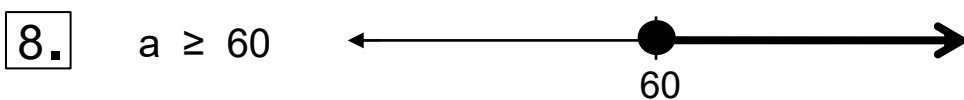
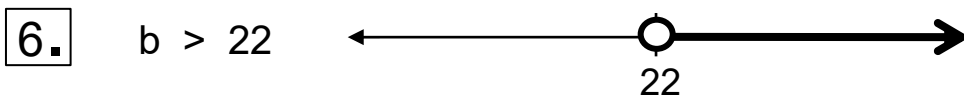
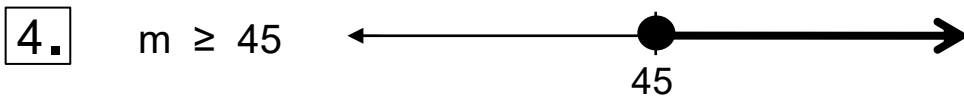
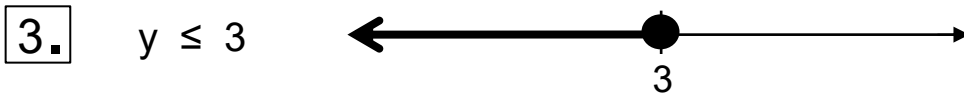
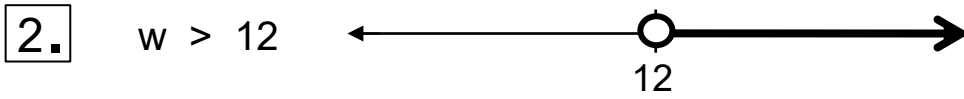
21.  $g + 4 > -3$

22.  $-3 > -3 + x$

23.  $-y \leq 9$

24.  $-8 \geq \frac{p}{-2}$

## SOLUTIONS



## SOLUTIONS

