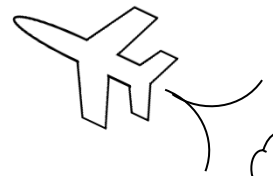


MAth on the Fly!



NAME: _____ DATE: _____

Multiplying Fractions and Mixed Numbers

Solve each problem. Reduce your answers, if possible.

1. $\frac{2}{3} \times \frac{4}{5}$

2. $\frac{7}{8} \cdot \frac{1}{2}$

3. $\frac{2}{6} \cdot \frac{3}{5}$

4. $\frac{7}{24} \times 2$

5. $\frac{1}{3} \times \frac{9}{11}$

6. $19 \cdot \frac{1}{2}$

7. $\frac{4}{7} \cdot \frac{5}{6}$

8. $\frac{7}{11} \times 4$

9. $\frac{7}{9} \times \frac{3}{4}$

10. $8 \cdot \frac{2}{5}$

11. $\frac{9}{10} \cdot \frac{5}{6}$

12. $\frac{6}{7} \times \frac{4}{9}$

13. $1\frac{1}{2} \times 1\frac{2}{5}$

14. $1\frac{5}{6} \cdot 1\frac{3}{4}$

15. $3\frac{7}{10} \cdot 5$

16. $2\frac{1}{5} \cdot 3\frac{2}{3}$

17. $2\frac{5}{8} \times 1\frac{4}{7}$

18. $5\frac{1}{2} \cdot \frac{6}{11}$

19. $6 \cdot 2\frac{3}{8}$

20. $1\frac{1}{4} \times 7\frac{2}{5}$

21. $3\frac{2}{3} \times 1\frac{3}{11}$

22. $\frac{7}{9} \cdot 4\frac{1}{2}$

23. $1\frac{7}{8} \cdot 6\frac{2}{5}$

24. $9\frac{3}{5} \times 3\frac{6}{8}$

SOLUTIONS

1. $\frac{8}{15}$

2. $\frac{7}{16}$

3. $\frac{1}{5}$

4. $\frac{7}{12}$

5. $\frac{3}{11}$

6. $9\frac{1}{2}$ or $\frac{19}{2}$

7. $\frac{10}{21}$

8. $2\frac{6}{11}$ or $\frac{28}{11}$

9. $\frac{7}{12}$

10. $3\frac{1}{5}$ or $\frac{16}{5}$

11. $\frac{3}{4}$

12. $\frac{8}{21}$

13. $2\frac{1}{10}$ or $\frac{21}{10}$

14. $3\frac{5}{24}$ or $\frac{77}{24}$

15. $18\frac{1}{2}$ or $\frac{37}{2}$

16. $8\frac{1}{15}$ or $\frac{121}{15}$

17. $4\frac{1}{8}$ or $\frac{33}{8}$

18. 3

19. $14\frac{1}{4}$ or $\frac{57}{4}$

20. $9\frac{1}{4}$ or $\frac{37}{4}$

21. $4\frac{2}{3}$ or $\frac{14}{3}$

22. $3\frac{1}{2}$ or $\frac{7}{2}$

23. 12

24. 36