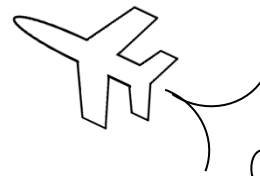


MAth on the Fly!



NAME: _____ DATE: _____

Conversions of Fractions and Decimals

Change each fraction to a decimal.

1. $\frac{3}{4}$

2. $\frac{2}{5}$

3. $\frac{7}{10}$

4. $\frac{1}{6}$

5. $\frac{5}{9}$

6. $\frac{8}{11}$

7. $\frac{1}{12}$

8. $\frac{9}{20}$

9. $\frac{2}{15}$

10. $\frac{7}{40}$

11. $\frac{29}{50}$

12. $\frac{18}{25}$

Change each decimal to a fraction.

13. 0.6

14. 0.45

15. 0.08

16. 0.941

17. 0.025

18. 0.1307

19. 0.0364

20. 0.0009

21. 6.9

22. 14.32

23. 21.05

24. 8.017

Get the latest in ACT Math test prep with books, worksheets and more!

<https://www.mathonthefly.com>

SOLUTIONS

$$1. \quad \frac{3}{4} = 0.75$$

$$2. \quad \frac{2}{5} = 0.4$$

$$3. \quad \frac{7}{10} = 0.7$$

$$4. \quad \frac{1}{6} = 0.1666\dots = 0.1\bar{6}$$

$$5. \quad \frac{5}{9} = 0.555\dots = 0.\bar{5}$$

$$6. \quad \frac{8}{11} = 0.7272\dots = 0.\bar{72}$$

$$7. \quad \frac{1}{12} = 0.08333\dots = 0.08\bar{3}$$

$$8. \quad \frac{9}{20} = 0.45$$

$$9. \quad \frac{2}{15} = 0.1333\dots = 0.1\bar{3}$$

$$10. \quad \frac{7}{40} = 0.175$$

$$11. \quad \frac{29}{50} = 0.58$$

$$12. \quad \frac{18}{25} = 0.72$$

$$13. \quad \frac{6}{10} \xrightarrow{\text{reduce}} \frac{3}{5}$$

$$14. \quad \frac{45}{100} \xrightarrow{\text{reduce}} \frac{9}{20}$$

$$15. \quad \frac{8}{100} \xrightarrow{\text{reduce}} \frac{2}{25}$$

$$16. \quad \frac{941}{1000}$$

$$17. \quad \frac{25}{1000} \xrightarrow{\text{reduce}} \frac{1}{40}$$

$$18. \quad \frac{1307}{10000}$$

$$19. \quad \frac{364}{10000} \xrightarrow{\text{reduce}} \frac{91}{2500}$$

$$20. \quad \frac{9}{10000}$$

$$21. \quad 6 \frac{9}{10}$$

$$22. \quad 14 \frac{32}{100} \xrightarrow{\text{reduce}} 14 \frac{8}{25}$$

$$23. \quad 21 \frac{5}{100} \xrightarrow{\text{reduce}} 21 \frac{1}{20}$$

$$24. \quad 8 \frac{17}{1000}$$