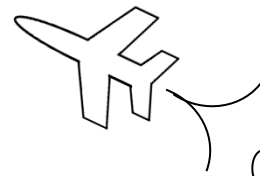


MAth on the Fly!



NAME: _____ DATE: _____

Factors and Multiples

Find all the factors for each number below.

1. 12 2. 16 3. 20 4. 24

5. 27 6. 30 7. 36 8. 40

9. 45 10. 48 11. 54 12. 56

13. 60 14. 63 15. 64 16. 72

Find the first ten multiples of each number below.

17. 3 18. 5 19. 4

20. 7 21. 9 22. 6

23. 8 24. 10 25. 12

26. 11 27. 15 28. 20

SOLUTIONS

1. 12 Factors of 12: 1,2,3,4,6,12
(1 x 12) (2 x 6) (3 x 4)

2. 16 Factors of 16: 1,2,4,8,16
(1 x 16) (2 x 8) (4 x 4)

3. 20 Factors of 20: 1,2,4,5,10,20
(1 x 20) (2 x 10) (4 x 5)

4. 24 Factors of 24: 1,2,3,4,6,8,12,24
(1 x 24) (2 x 12) (3 x 8) (4 x 6)

5. 27 Factors of 27: 1,3,9,27
(1 x 27) (3 x 9)

6. 30 Factors of 30: 1,2,3,5,6,10,15,30
(1 x 30) (2 x 15) (3 x 10) (5 x 6)

7. 36 Factors of 36: 1,2,3,4,6,9,12,18,36
(1 x 36) (2 x 18) (3 x 12)
(4 x 9) (6 x 6)

8. 40 Factors of 40: 1,2,4,5,8,10,20,40
(1 x 40) (2 x 20) (4 x 10) (5 x 8)

9. 45 Factors of 45: 1,3,5,9,15,45
(1 x 45) (3 x 15) (5 x 9)

10. 48 Factors of 48:
1,2,3,4,6,8,12,16,24,48
(1 x 48) (2 x 24) (3 x 16) (4 x 12)
(6 x 8)

11. 54 Factors of 54: 1,2,3,6,9,18,27,54
(1 x 54) (2 x 27) (3 x 18) (6 x 9)

12. 56 Factors of 56: 1,2,4,7,8,14,28,56
(1 x 56) (2 x 28) (4 x 14) (7 x 8)

13. 60 Factors of 60:
1,2,3,4,5,6,10,12,15,20,30,60
(1 x 60) (2 x 30) (3 x 20) (4 x 15)
(5 x 12) (6 x 10)

14. 63 Factors of 63: 1,3,7,9,21,63
(1 x 63) (3 x 21) (7 x 9)

15. 64 Factors of 64: 1,2,4,8,16,32,64
(1 x 64) (2 x 32) (4 x 16) (8 x 8)

16. 72 Factors of 72:
1,2,3,4,6,8,9,12,18,24,36,72
(1 x 72) (2 x 36) (3 x 24) (4 x 18)
(6 x 12) (8 x 9)

17. Multiples of 3: 3,6,9,12,15,18,21,24,27,30

18. Multiples of 5: 5,10,15,20,25,30,35,40,45,50

19. Multiples of 4: 4,8,12,16,20,24,28,32,36,40

SOLUTIONS

20. Multiples of 7: 7,14,21,28,35,42,49,56,63,70
21. Multiples of 9: 9,18,27,36,45,54,63,72,81,90
22. Multiples of 6: 6,12,18,24,30,36,42,48,54,60
23. Multiples of 8: 8,16,24,32,40,48,56,64,72,80
24. Multiples of 10: 10,20,30,40,50,60,70,80,90,100
25. Multiples of 12: 12,24,36,48,60,72,84,96,108,120
26. Multiples of 11: 11,22,33,44,55,66,77,88,99,110
27. Multiples of 15: 15,30,45,60,75,90,105,120,135,150
28. Multiples of 20: 20,40,60,80,100,120,140,160,180,200