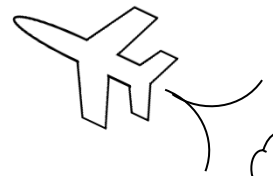


# MAth on the Fly!



NAME: \_\_\_\_\_ DATE: \_\_\_\_\_

## Dividing Fractions and Mixed Numbers

Solve each problem. Reduce your answers, if possible.

1.  $\frac{2}{3} \div \frac{4}{5}$

2.  $\frac{7}{9} \div 2$

3.  $\frac{3}{10} \div \frac{6}{8}$

4.  $\frac{4}{8} \div \frac{5}{10}$

5.  $\frac{3}{4} \div \frac{2}{7}$

6.  $5 \div \frac{6}{11}$

7.  $\frac{1}{22} \div \frac{1}{8}$

8.  $\frac{9}{12} \div \frac{2}{3}$

9.  $\frac{9}{11} \div \frac{5}{6}$

10.  $\frac{7}{15} \div \frac{3}{5}$

11.  $\frac{4}{7} \div 3$

12.  $\frac{8}{10} \div \frac{2}{9}$

13.  $1\frac{2}{3} \div 1\frac{3}{7}$

14.  $2\frac{5}{6} \div 1\frac{1}{3}$

15.  $2\frac{2}{5} \div 2\frac{1}{3}$

16.  $3\frac{1}{4} \div 8\frac{1}{2}$

17.  $3\frac{6}{9} \div 4\frac{3}{6}$

18.  $4\frac{4}{5} \div 12$

19.  $1\frac{6}{8} \div 8$

20.  $3\frac{3}{9} \div 1\frac{6}{9}$

21.  $\frac{7}{12} \div 3\frac{1}{2}$

22.  $5\frac{2}{3} \div 2\frac{2}{4}$

23.  $7\frac{1}{3} \div \frac{11}{12}$

24.  $4\frac{1}{2} \div 6$

## SOLUTIONS

1.  $\frac{5}{6}$

2.  $\frac{7}{18}$

3.  $\frac{2}{5}$

4. 1

5.  $2\frac{5}{8}$  or  $\frac{21}{8}$

6.  $9\frac{1}{6}$  or  $\frac{55}{6}$

7.  $\frac{4}{11}$

8.  $1\frac{1}{8}$  or  $\frac{9}{8}$

9.  $\frac{54}{55}$

10.  $\frac{7}{9}$

11.  $\frac{4}{21}$

12.  $3\frac{3}{5}$  or  $\frac{18}{5}$

13.  $1\frac{1}{6}$  or  $\frac{7}{6}$

14.  $2\frac{1}{8}$  or  $\frac{17}{8}$

15.  $1\frac{1}{35}$  or  $\frac{36}{35}$

16.  $\frac{13}{34}$

17.  $\frac{22}{27}$

18.  $\frac{2}{5}$

19.  $\frac{7}{32}$

20. 2

21.  $\frac{1}{6}$

22.  $2\frac{4}{15}$  or  $\frac{34}{15}$

23. 8

24.  $\frac{3}{4}$