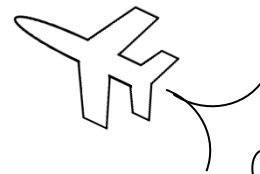


MAth on the Fly!



NAME: _____ DATE: _____

Distributive Property

Use the distributive property to expand each expression.

1. $5(m + 6)$

2. $-2(x + 4)$

3. $3(a - 7)$

4. $-7(y - 1)$

5. $4(k - 5)$

6. $-(9w + 8)$

7. $\frac{2}{3}(c + 9)$

8. $-3(5b - 2)$

9. $8(2e + 1)$

10. $-(7 - 6p)$

11. $2(4 + 3u)$

12. $\frac{1}{2}(18a + 6)$

13. $0.75(a - 40)$

14. $-0.4(2 - 5x)$

SOLUTIONS

$$\boxed{1.} \quad 5(m + 6) = 5m + 30$$

$$\boxed{2.} \quad -2(x + 4) = -2x - 8$$

$$\boxed{3.} \quad 3(a - 7) = 3a - 21$$

$$\boxed{4.} \quad -7(y - 1) = -7y + 7$$

$$\boxed{5.} \quad 4(k - 5) = 4k - 20$$

$$\boxed{6.} \quad -(9w + 8) = -9w - 8$$

$$\boxed{7.} \quad \frac{2}{3}(c + 9) = \frac{2}{3}c + 6$$

$$\boxed{8.} \quad -3(5b - 2) = -15b + 6$$

$$\boxed{9.} \quad 8(2e + 1) = 16e + 8$$

$$\boxed{10.} \quad -(7 - 6p) = -7 + 6p$$

$$\boxed{11.} \quad 2(4 + 3u) = 8 + 6u$$

$$\boxed{12.} \quad \frac{1}{2}(18a + 6) = 9a + 3$$

$$\boxed{13.} \quad 0.75(a - 40) = 0.75a - 30$$

$$\boxed{14.} \quad -0.4(2 - 5x) = -0.8 + 2x$$