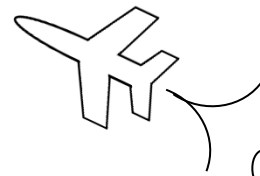




# MAth on the Fly!



NAME: \_\_\_\_\_ DATE: \_\_\_\_\_

## Adding and Subtracting Matrices

Solve each problem.

$$1. \begin{bmatrix} 2 & -3 \\ -5 & 7 \end{bmatrix} + \begin{bmatrix} -6 & 4 \\ 5 & -9 \end{bmatrix}$$

$$2. \begin{bmatrix} -8 & 2 \\ 4 & -3 \end{bmatrix} - \begin{bmatrix} 1 & 5 \\ 3 & -2 \end{bmatrix}$$

$$3. \begin{bmatrix} 0 & -4 \\ -6 & 8 \\ 9 & -2 \end{bmatrix} + \begin{bmatrix} -3 & 4 \\ 2 & -1 \\ -5 & -7 \end{bmatrix}$$

$$4. \begin{bmatrix} 6 & 1 \\ -7 & -3 \\ -8 & 4 \end{bmatrix} - \begin{bmatrix} 2 & -6 \\ -1 & -9 \\ 1 & 7 \end{bmatrix}$$

$$5. \begin{bmatrix} 1/2 & -4 & 1.6 \\ -0.3 & -3/5 & 2 \end{bmatrix} + \begin{bmatrix} 7/8 & -4 & -2.5 \\ 0.1 & 1/10 & -1/9 \end{bmatrix}$$

Find the unknown values in each equation below.

$$6. \begin{bmatrix} W & 3 \\ -8 & X \end{bmatrix} + \begin{bmatrix} 6 & Z \\ Y & 4 \end{bmatrix} = \begin{bmatrix} 4 & -6 \\ -1 & 0 \end{bmatrix}$$

$$7. \begin{bmatrix} 5 & W \\ X & 8 \end{bmatrix} - \begin{bmatrix} Y & -5 \\ 2 & Z \end{bmatrix} = \begin{bmatrix} -4 & 2 \\ -8 & 9 \end{bmatrix}$$

## SOLUTIONS

$$1. \begin{bmatrix} -4 & 1 \\ 0 & -2 \end{bmatrix}$$

$$2. \begin{bmatrix} -9 & -3 \\ 1 & -1 \end{bmatrix}$$

$$3. \begin{bmatrix} -3 & 0 \\ -4 & 7 \\ 4 & -9 \end{bmatrix}$$

$$4. \begin{bmatrix} 4 & 7 \\ -6 & 6 \\ -9 & -3 \end{bmatrix}$$

$$5. \begin{bmatrix} 11/8 & -8 & -0.9 \\ -0.2 & -1/2 & 17/9 \end{bmatrix}$$

$$6. \begin{array}{l} W + 6 = 4 \quad \Rightarrow \quad W = -2 \\ X + 4 = 0 \quad \Rightarrow \quad X = -4 \\ -8 + Y = -1 \quad \Rightarrow \quad Y = 7 \\ 3 + Z = -6 \quad \Rightarrow \quad Z = -9 \end{array}$$

$$7. \begin{array}{l} W - -5 = 2 \quad \Rightarrow \quad W = -3 \\ X - 2 = -8 \quad \Rightarrow \quad X = -6 \\ 5 - Y = -4 \quad \Rightarrow \quad Y = 9 \\ 8 - Z = 9 \quad \Rightarrow \quad Z = -1 \end{array}$$